

Maki Fine Arts

www.makifinearts.com

5-1-1F, Nishigokencho, Shinjuku-Ku, Tokyo 162-0812
Email: info@makifinearts.com Tel : +81-(0)3-5579-2086

Group Show

Yoshio Shirakawa | Fuminao Suenaga | Keisuke Shirota | Shunsuke Kano | Sean Micka

June 25 – July 24, 2022



Fuminao Suenaga

Search Results

2022

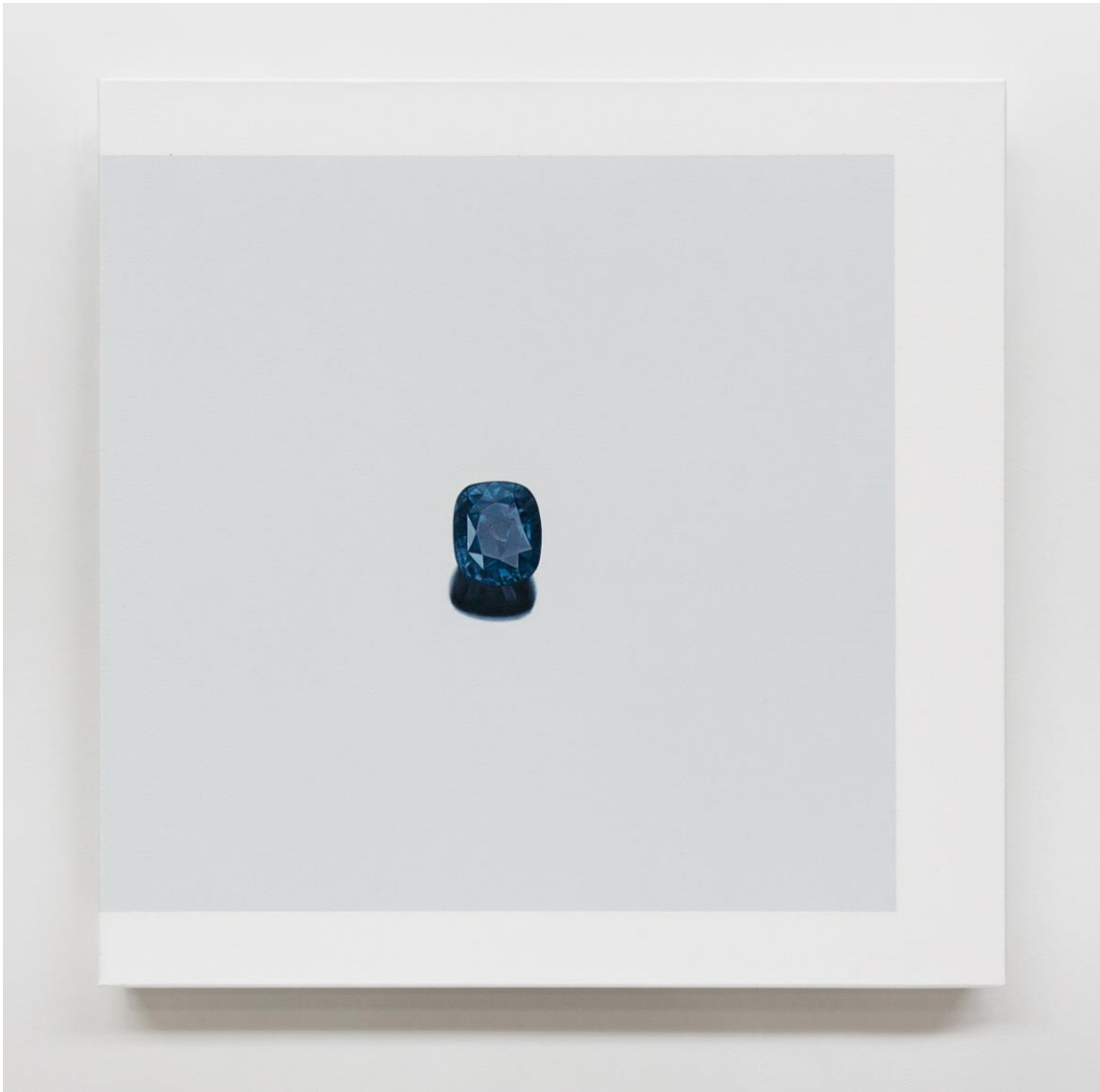
Acrylic, pigment on cotton, panel

48.5×63.5cm

Maki Fine Arts

www.makifinearts.com

5-1-1F, Nishigokencho, Shinjuku-Ku, Tokyo 162-0812
Email: info@makifinearts.com Tel : +81-(0)3-5579-2086



Sean Micka

• 334 FINE CEYLAN SAPPHIRE, Cushion-shaped and weighing 12.73 cts. Accompanied by GRS-Swiss lab report #9904329 stating the sapphire's origin is Sri Lanka and there is no indication to be natural with no evidence of thermal enhancement. \$35,000 – 40,000. Important Jewelry, and Rare & Exotic Gemstones, Grand Havana Room, Thursday, September 30, 1999, Antiquorum Auctioneers, New York. Property of Various Owners.

2018

Oil on Canvas

60.96 x 60.96 cm

Maki Fine Arts

www.makifinearts.com

5-1-1F, Nishigokencho, Shinjuku-Ku, Tokyo 162-0812
Email: info@makifinearts.com Tel : +81-(0)3-5579-2086



Keisuke Shirota

Untitled

2014

Photograph and watercolor on paper

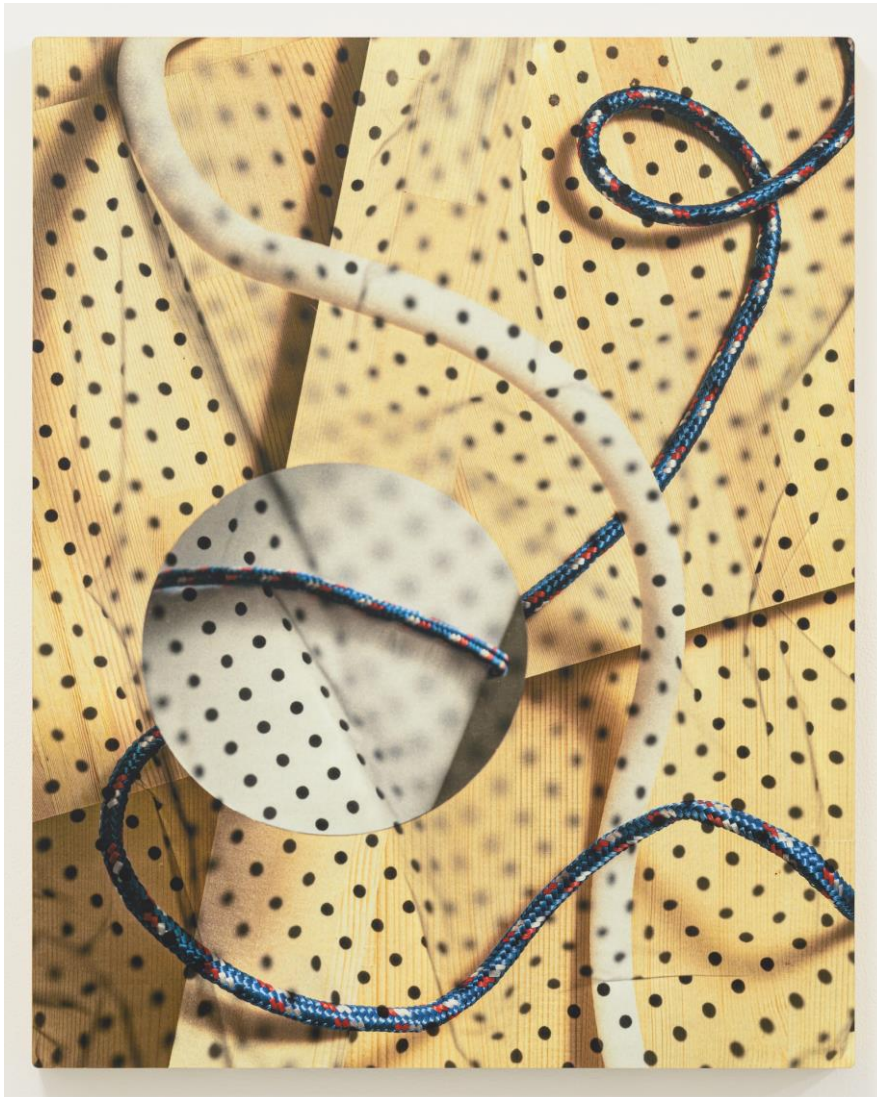
38.4 × 26.8cm

Maki Fine Arts

www.makifinearts.com

5-1-1F, Nishigokencho, Shinjuku-Ku, Tokyo 162-0812

Email: info@makifinearts.com Tel : +81-(0)3-5579-2086



Shunsuke Kano

Pink Shadow_73

2021

Inkjet print, lumber

50×40 cm

Maki Fine Arts

www.makifinearts.com

5-1-1F, Nishigokencho, Shinjuku-Ku, Tokyo 162-0812
Email: info@makifinearts.com Tel : +81-(0)3-5579-2086



Yoshio Shirakawa

Information

2022

Acrylic, tinplate, plywood, curtain fabric, canvas

49 × 26.5 cm

Maki Fine Arts is pleased to present a group show featuring new and recent works by five artists starting Saturday, June 25, through Sunday, July 24, 2022.

Maki Fine Arts

www.makifinearts.com

5-1-1F, Nishigokencho, Shinjuku-Ku, Tokyo 162-0812
Email: info@makifinearts.com Tel : +81-(0)3-5579-2086

Yoshio Shirakawa

Born 1948 in Fukuoka, Japan, Yoshio Shirakawa graduated from Kunstakademie Düsseldorf in 1981. Recent shows include *To the Enneades* (Rin Art Association, 2022), *Summer Light* (solo, Maki Fine Arts, 2019), *Weavers of Worlds –A Century of Flux in Japanese Modern/Contemporary Art—*(Museum of Contemporary Art Tokyo, 2019), *Production Process* (solo, Rin Art Association, 2018), *Beyond the future of Meld Sculpture* (curation, Maki Fine Arts, 2018), *Creative Dialogue with Museum 01—MONUMENT* (Tottori Prefecture Museum, 2017), *Aichi Triennale 2016—A Rainbow Caravan* (2016), *The Capital Room: Beyond Three Dimensional Logical Pictures—vol. 7* (solo, gallery α M, 2016), and *dada, dada, da* (solo, Arts Maebashi, 2014).

Fuminao Suenaga

Born 1974 in Yamagata, Japan, Fuminao Suenaga graduated from Tokyo Zokei University in 1999 with a major in painting. Recent shows include *Picture Frame* (solo, Maki Fine Arts, 2020), *Publicness of the Art Center* (Art Tower Mito, Contemporary Art Gallery, 2019-2020), *Weavers of Worlds—A Century of Flux in Japanese Modern/Contemporary Art—*(Museum of Contemporary Art Tokyo, 2019), *MOT Collection: Pleased to meet you. New Acquisitions in recent years* (Museum of Contemporary Art Tokyo, 2019), *Search Results* (solo, Maki Fine Arts, Tokyo, 2018), *railroad siding 2017* (former Tokorozawa city supply center for school meals, Saitama, 2017), *APMoA Project ARCH vol. 11 Museum Piece* (Aichi Prefecture Museum of Art, 2014), and *Born in 1974* (part 1 of a 40th anniversary show, Museum of Modern Art, Gunma, 2014).

Keisuke Shirota

Born 1975 in Kanagawa, Japan, Keisuke Shirota received his MFA from Tokyo University of the Arts, Department of Design in 2003. His recent exhibitions include *Out of the frame* (solo, Maki Fine Arts, 2022), *Over* (solo, Maki Fine Arts, 2021), *PAINT,SEEING PHOTOS* (solo, Chigasaki City Museum of Art, 2019-2020), *Tracing / Background* (solo, Base Gallery, 2013), *Shell Artist Selection* (The National Art Center, Tokyo, 2013), *Photo Reference: Photographic Image in Contemporary Japanese Art Practices* (Belgrade Cultural Center, 2012), and his solo show at Galerie Stefan Röpke (2010).

Shunsuke Kano

Born 1983 in Osaka, Japan, Shunsuke Kano completed his graduate studies at Kyoto Saga University of Arts in 2010. Recent shows include *Gaps in the Sandwich* (solo, The Triangle, Kyoto City KYOCERA Museum of Art, 2021-2022), *Cascades and Barriers* (solo, Maki Fine Arts, 2021), *Compression Training* (solo, Clinic, 2021), *Counter Program* (solo, Art-Space TARN, 2020), *Fountain for the 8th shiseido art egg* (Shiseido Gallery, 2021), *VOCA 2017 Vision of Contemporary Art* (Ueno Royal Museum, 2017), and *Photography Will Be* (Aichi Prefectural Museum of Art, 2014). Kano is also a member of the COPY TRAVELLERS.

Maki Fine Arts

www.makifinearts.com

5-1-1F, Nishigokencho, Shinjuku-Ku, Tokyo 162-0812
Email: info@makifinearts.com Tel : +81-(0)3-5579-2086

Sean Micka

Born 1979 in Boston, Massachusetts, Sean Micka lives and works in Brooklyn, New York. Micka was a participant in the Whitney Museum of American Art's Independent Study Program from 2012-2013 and 2013-2014. Recent shows include, *Fine Silver and Extraordinary Diamonds from the Estate of an Important Collection* (Josée Bienvenu Gallery, 2019), *People Who Work Here* (CFCP & David Zwirner Gallery, 2019), *Edges, Corners, Shadows* (Three Star Books, 2018), and *Condition Report: Deregulation* (Abron Arts Center, 2014).

- Group Show - Yoshio Shirakawa | Fuminao Suenaga | Keisuke Shirota | Shunsuke Kano | Sean Micka
- June 25 – July 24, 2022
- Maki Fine Arts / 5-1-1F, Nishigokencho, Shinjuku-Ku, Tokyo 162-0812
makifinearts.com / Tel : +81-(0)3-5579-2086 / E-mail : info@makifinearts.com
- Wednesday - Saturday 12:00-19:00 / Sunday 12:00 -17:00
- Closed on Monday, Tuesday